

| Technical data : | |
|---------------------------|-------------|
| Rated voltage | 60 V AC/DC |
| Rated current | 4 A |
| Insulation resistance | > 1000 MΩ |
| Ambient temperature range | -25...70 °C |

| Protection : | |
|-------------------|------|
| Protection degree | IP65 |

| M12 straight male connector : | |
|-------------------------------|--|
| Locking nut/screw material | Zamak, nickel-plated |
| Overmoulding material | TPU, self-extinguishing |
| Contact diameter | Ø1 mm |
| Contact material | CuZn, pre-plated with nickel and gold-plated |
| Contact resistance | < 5 mΩ |

| M12 straight female connector : | |
|---------------------------------------|--|
| Locking nut/screw material | Zamak, nickel-plated |
| Spot welding splash protection sleeve | |
| Overmoulding material | TPU, self-extinguishing |
| Contact diameter | Ø1 mm |
| Contact material | CuZn, pre-plated with nickel and gold-plated |
| Contact resistance | < 5 mΩ |

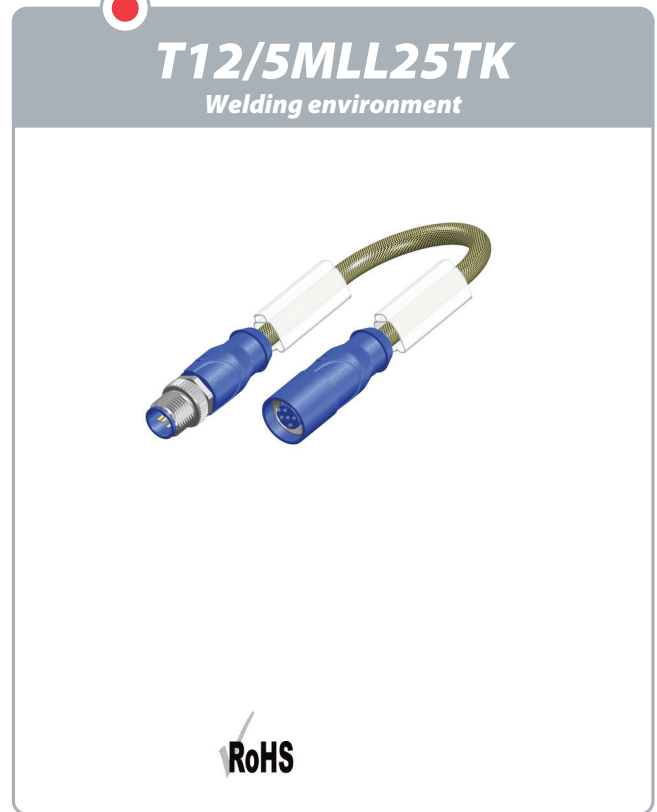
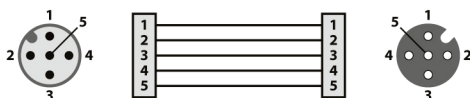
| Cable characteristics : | |
|-------------------------------|------------------------------|
| Sheath material | PVC |
| Wire structure | 5 G 0,34 mm ² |
| Conductor class | 6 |
| Sheath diameter | 5,8 mm |
| Flame resistance according to | IEC 60332-1 (VDE 0472-804/B) |

| Cable protection characteristics : | |
|--|----------------------|
| Aramid fiber (kevlar) braided sleeving | |
| Max. contact temperature | +250°C (peak +330°C) |

| Cable length : | |
|----------------|------------|
| L length | 2 m |
| Other length | On request |

| Accessories (included) : | |
|--------------------------|--|
| 2 label holders | |

Wiring diagram :



Dimensions :

