

| Technical data :          |  |
|---------------------------|--|
| Output type               | PNP  |
| Function                  | NO   |
| Operating voltage         | 10...30V DC                                |
| Operating current         | 200 mA                                     |
| No-load consumption       | < 30 mA                                    |
| Voltage drop              | < 2 V                                      |
| Residual current          | < 70 µA                                    |
| Ambient temperature range | 0...60 °C                                  |
| Switching frequency       | 30 Hz                                      |
| Power-on delay            | < 300 ms                                   |
| Adjustment method         | Detection threshold adjustment by teaching |

| Protection :                 |                        |
|------------------------------|------------------------|
| Reverse polarity protection  |                        |
| Short-circuit protection     |                        |
| Overload protection          |                        |
| IEC 61000-4-2 (ESD)          | 4 kV contact / 8kV air |
| IEC 61000-4-4 (Burst)        | 2kV / 5kHz             |
| IEC 61000-4-6 (RF conducted) | 3V 150kHz...80MHz      |
| Protection degree            | IP67                   |

| Materials :       |                              |
|-------------------|------------------------------|
| Housing           | Anodized aluminium           |
| Electrode bracket | Stainless steel, PTFE coated |
| Sensing face      | Scratch-resistant PMMA       |

| Status indication :                           |                  |
|---|------------------|
| Power   | Green LED        |
| Output  | Yellow LED       |
| Diagnostic (Limit of detection/ Detection OK) | Red / Yellow LED |

| Connection : |     |
|--------------|-----|
| Connector    | M12 |
| Connector    | M8  |

| Accessories (included) :           |  |
|------------------------------------|--|
| 1 cap for M8 receptacle (teaching) |  |
| 1 G 1/8 cap                        |  |

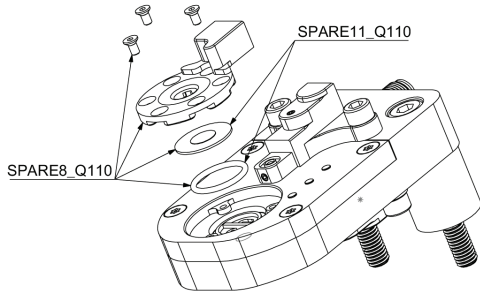
| Accessories (not included) : |  |
|------------------------------|--|
| Teaching pocket (BA01)       |  |

| Detected electrode type : |  |
|---------------------------|--|
| 20mm / 16mm               |  |

| Authorized maximum force on electrode bracket : |  |
|---|--|
| 4 kN  |  |

| Electrode bracket screw maximum torque : |  |
|--|--|
| 1 N.m                                    |  |

**Spare parts & Replacing mode :**

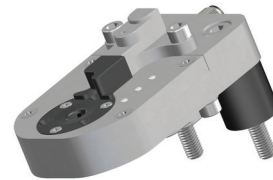


**Truth table :**

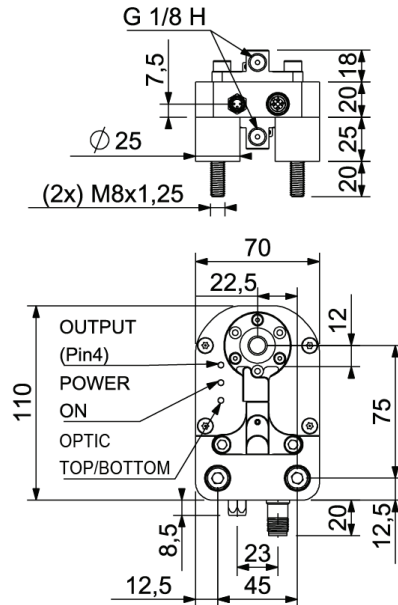
| OPTIQUE DESSUS<br>OPTIC TOP        | OPTIQUE DESSOUS<br>OPTIC BOTTOM | SORTIE (Broche 4)<br>OUTPUT (Pin 4) |
|------------------------------------|---------------------------------|-------------------------------------|
| 1                                  | 1                               | 1                                   |
| Tout autre état / All other states |                                 | 0                                   |

## SEA9033211701K

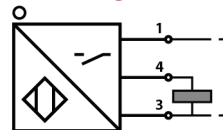
Brightness control series  
Q110



**Dimensions :**



**Connection diagram :**



**Pin assignment :**

