

Technical data :

Output type	PNP
Function	NO
Operating voltage	10...30V DC
Operating current	200 mA
No-load consumption	< 30 mA
Voltage drop	< 2 V
Residual current	< 70 µA
Ambient temperature range	0...60 °C
Switching frequency	30 Hz
Power-on delay	< 300 ms
Adjustment method	Detection threshold adjustment by teaching

Protection :

Reverse polarity protection	
Short-circuit protection	
Overload protection	
IEC 61000-4-2 (ESD)	4 kV contact / 8kV air
IEC 61000-4-4 (Burst)	2kV / 5kHz
IEC 61000-4-6 (RF conducted)	3V 150kHz...80MHz
Protection degree	IP67

Materials :

Housing	Anodized aluminium
Electrode bracket	Stainless steel, PTFE coated
Sensing face	Scratch-resistant PMMA

Status indication :

Power	Green LED
Upper electrode OK / Limit OK	Yellow LED / Red LED
Lower electrode OK / Limit OK	Yellow LED / Red LED

Connection :

Connector	M12
Connector	M8

Accessories (included) :

- 1 cap for M8 receptacle (teaching)
- 1 G 1/8 cap

Accessories (not included) :

- Teaching pocket (BA01)

Detected electrode type :

20mm / 16mm

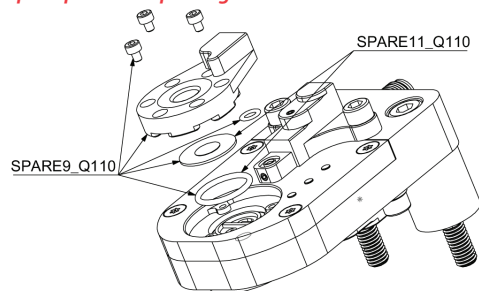
Autorized maximum force on electrode bracket :

4 kN

Electrode bracket screw maximum torque :

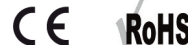
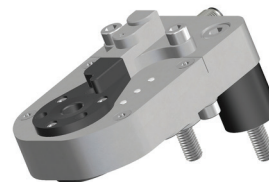
1 N.m

Spare parts & Replacing mode :

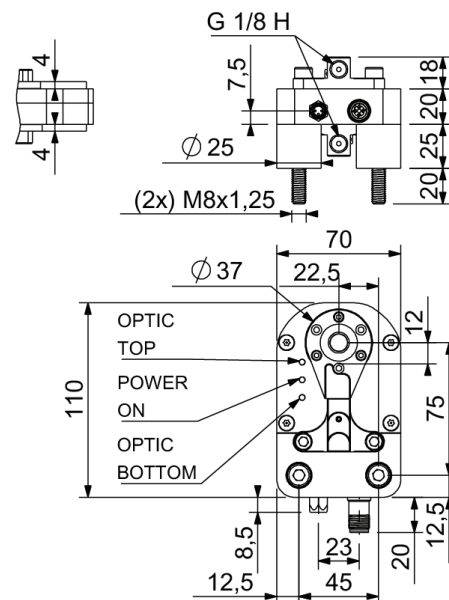


SEA9033211701J

Brightness control series
Q110



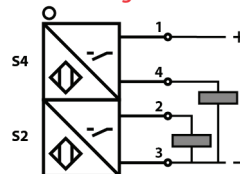
Dimensions :



Truth table :

OPTIQUE DESSOUS OPTIC BOTTOM	OPTIQUE DESSUS OPTIC TOP	SORTIE S2 OUTPUT S2	SORTIE S4 OUTPUT S4
0	0	0	0
0	1	0	1
1	0	1	0
1	1	1	1

Connection diagram :



Pin assignment :

