

Technical data :

Output type	PNP
Function	NO
Operating voltage	10...30V DC
Operating current	200 mA
No-load consumption	< 30 mA
Voltage drop	< 2 V
Residual current	< 70 μ A
Ambient temperature range	0...60 °C
Switching frequency	30 Hz
Power-on delay	< 300 ms
Adjustment method	Detection threshold adjustment by teaching

Protection :

Reverse polarity protection	
Short-circuit protection	
Overload protection	
IEC 61000-4-2 (ESD)	4 kV contact / 8kV air
IEC 61000-4-4 (Burst)	2kV / 5kHz
IEC 61000-4-6 (RF conducted)	3V 150kHz...80MHz
Protection degree	IP67

Materials :

Housing	Anodized aluminium
Electrodes brackets / Sensing faces	Stainless steel / PMMA

Status indication :

Power (PWR)	Green LED
Output Good (Pin2)	Yellow LED
Output Limit OK (Pin4)	Red LED

Connection :

Connector	M12
Connector	M8

Accessories (included) :

1 cap for M8 receptacle (teaching)

Accessories (not included) :

Teaching pocket (BA01)

Detected electrode type :

20mm / 16mm

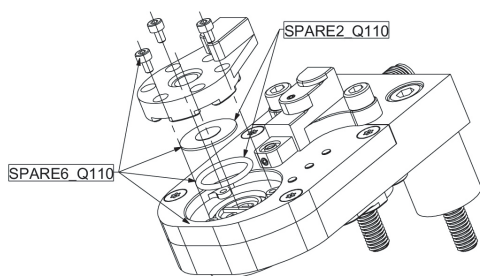
Authorized maximum force on electrode bracket :

4 kN

Electrode bracket screw maximum torque :

1 N.m

Spare parts & Replacing mode :

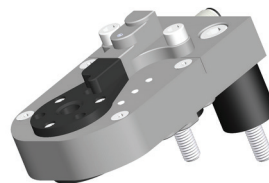


Truth table :

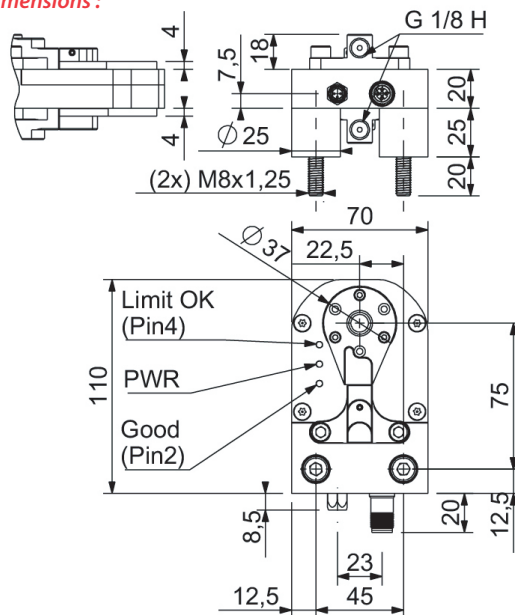
OPTIC TOP	OPTIC BOTTOM	OUTPUT S4	OUTPUT S2
Good	Good	0	1
Limit OK	Limit OK	1	0
All other states		0	0

SEA9033211701E

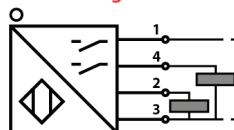
Brightness control series
Q110



Dimensions :



Connection diagram :



Pin assignment :

