

Technical data :	
Output type	PNP
Function	NO
Operating voltage	10...30V DC
Operating current	200 mA
No-load consumption	< 30 mA
Voltage drop	< 2 V
Residual current	< 70 µA
Ambient temperature range	0...60 °C
Switching frequency	30 Hz
Power-on delay	< 300 ms
Adjustment method	Detection threshold adjustment by teaching

Protection :	
Reverse polarity protection	
Short-circuit protection	
Overload protection	
IEC 61000-4-2 (ESD)	4 kV contact / 8kV air
IEC 61000-4-4 (Burst)	2kV / 5kHz
IEC 61000-4-6 (RF conducted)	3V 150kHz...80MHz
Protection degree	IP67

Materials :	
Housing	Anodized aluminium
Electrodes brackets / Sensing faces	Stainless steel / PMMA

Status indication :	
Power	Green LED
Output	Yellow LED
Diagnostic (Limit of detection/ Detection OK)	Red / Yellow LED

Connection :	
Connector	M12
Connector	M8

Accessories (included) :	
1 cap for M8 receptacle (teaching)	

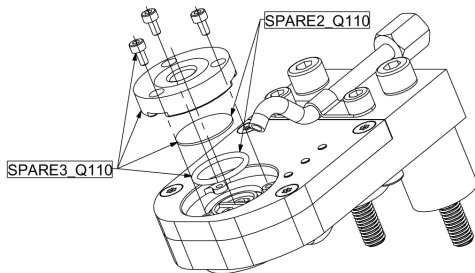
Accessories (not included) :	
Teaching pocket (BA01)	

Detected electrode type :	
20mm / 16mm	

Authorized maximum force on electrode bracket :	
4 kN	

Electrode bracket screw maximum torque :	
1 N.m	

**Spare parts & Replacing mode :**

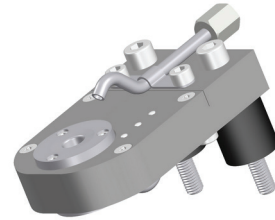


**Truth table :**

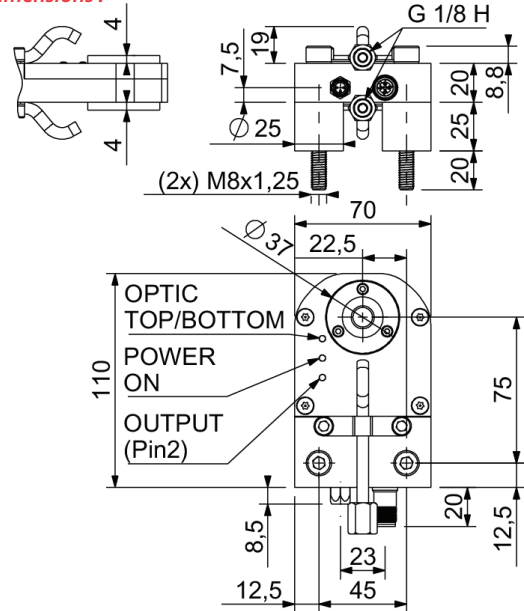
OPTIQUE DESSUS OPTIC TOP	OPTIQUE DESSOUS OPTIC BOTTOM	SORTIE (Broche 2) OUTPUT (Pin 2)
1	1	1
Tout autre état / All other states		0

## SEA9033211701A

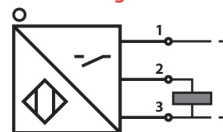
Brightness control series  
Q110



**Dimensions :**



**Connection diagram :**



**Pin assignment :**

