

Technical data :

Rated operating distance (Sn)	5 mm
Mounting mode	Flush
Function	NC
Operating voltage	10...55 V DC
Operating current	1,5...100 mA
Voltage drop	< 5 V
Residual current	< 600 µA
Ambient temperature range	0...85 °C
Hysteresis	3...15 %
Repeatability	< 5 %
Switching frequency	100 Hz

Protection :

Non-polarised	
Short-circuit protection	
Overload protection	
IEC 61000-4-2 (ESD)	4 kV contact / 8kV air
IEC 61000-4-4 (Burst)	2kV / 5kHz
IEC 61000-4-6 (RF conducted)	3V 150kHz...80MHz
Protection degree	IP20

Materials :

Housing	Anodized aluminium
Sensing face	PA

Status indication :

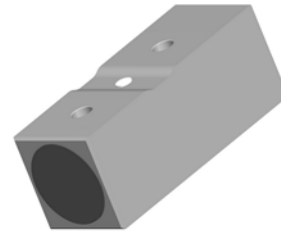
Output	Yellow LED
--------	------------

Connection :

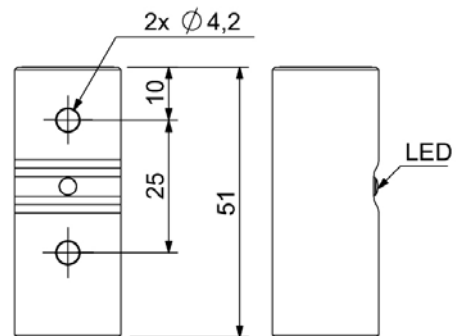
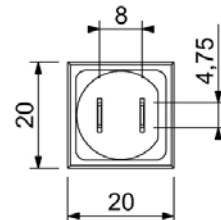
Quick fit terminal	FASTON (4,75 mm)
--------------------	------------------

SAA9057921802B

Q20



Dimensions :



Connection diagram :

