

Technical data :

| | |
|---------------------------|-------------|
| Rated voltage | 24 V DC |
| Rated current | 500 mA |
| Ambient temperature range | -40...70 °C |

Protection :

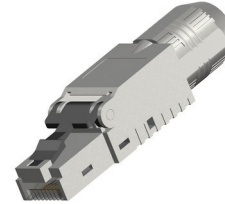
| | |
|-------------------|------|
| Protection degree | IP20 |
|-------------------|------|

RJ45 straight male connector :

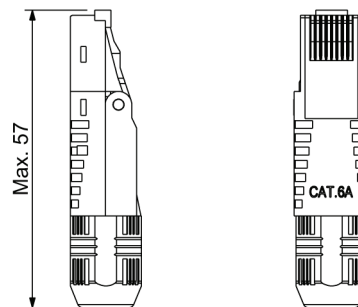
| | |
|---|--------------------------------------|
| Contact material | Copper alloy, gold-plated |
| Connection type | IDC contacts (AWG22), up to 4 cycles |
| Hood material | Zamak, nickel-plated |
| Cable gland | 4,5...8 mm |
| Cable output, up to Ø8 mm (PROFINET Cables : Ø6,5 mm) | |
| CAT.6A : PROFINET CAT.5 (100Mbit/s) compatibility | |

RJ45LM01P

Field bus



Dimensions :



Pin assignment :

