

Technical data :

Operating voltage	10...55 V DC
Nominal current per signal	2 A
Total current	4 A
Ambient temperature range	-25...70 °C

Protection :

Protection degree	IP67
Reverse polarity protection	
IEC 61000-4-2 (ESD)	4 kV contact / 8kV air
IEC 61000-4-4 (Burst)	2kV / 5kHz

Status indication :

Power	Green LED
Signal (2)	Yellow LED
Signal (4)	Yellow LED
Counter reader (TXD)	Yellow LED

Counter function :

1 «accumulating counter», 10 digits
 1 «daily counter», 10 digits
 The counters are incremented using the signal from contacts 2 or 4 on receptacle No. 1
 Receptacle N°4 is used for remote reading of the 2 counters as well as for resetting the «Daily counter» thanks to BL01 pocket.

Materials :

Housing	Anodized aluminium
Terminal block housing	PA
Potting	PUR (UL94-V0 self-extinguishing)

M12 female receptacle :

Receptacle material	CuZn, nickel-plated
Contact diameter	5 x Ø1 mm
Contact material	CuZn, pre-plated with nickel and gold-plated
Contact resistance	< 5 mΩ

M23 male receptacle :

Receptacle material	Zamak, nickel-plated
Contact diameter	16 x Ø1 mm + 3 x Ø1,5 mm
Contact material	CuZn, pre-plated with nickel and gold-plated
Contact resistance	< 5 mΩ
Ground contact (N°12) connected to metal body of connector	

Terminal block (13 positions) :

Contact material	Tin-plated copper alloy
Connection type	Spring connection (0,08...0,50 mm ²)

Accessories (included) :

9 label holders (EMR)
 4 plugs (OBTM12)
 1 flat seal (NBR)

Accessories (not included) :

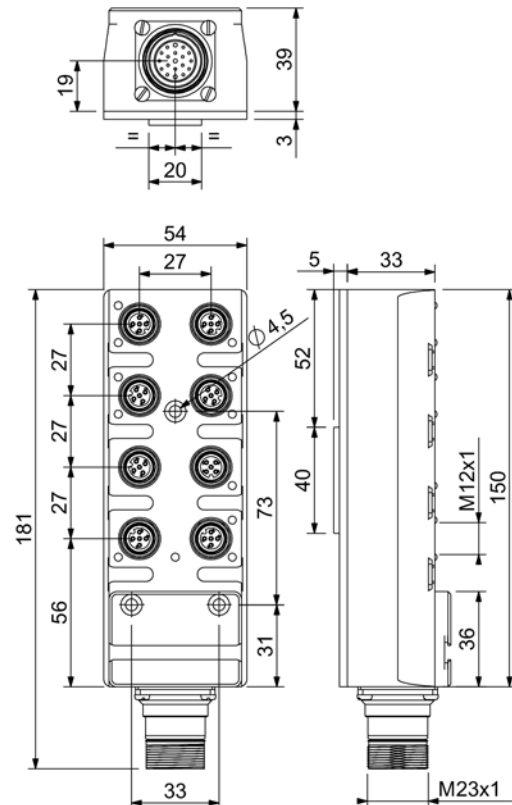
Interface (BL01)

REP8DES23WC2

Industrial automation



Dimensions :



Wiring diagram :

See following page

Wiring diagram :

