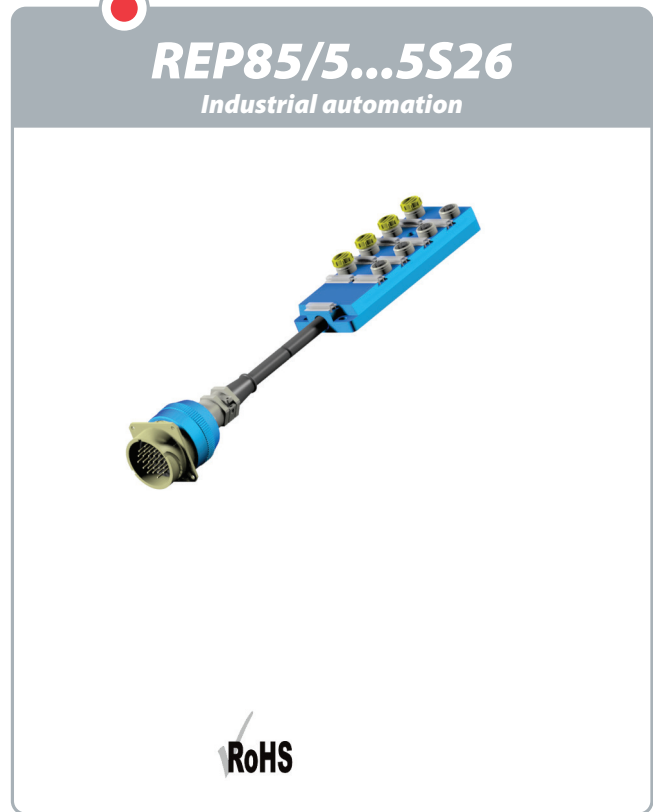
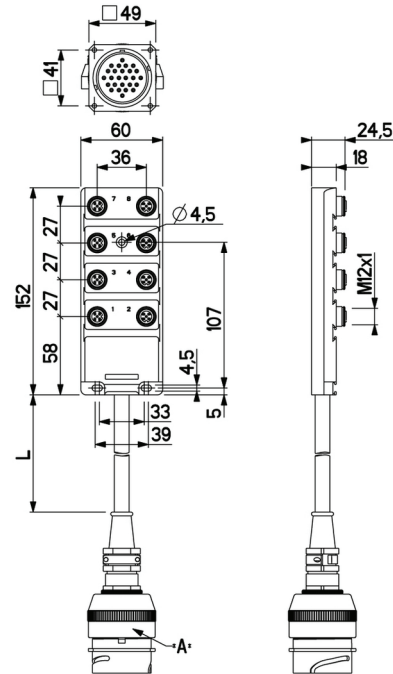


| | |
|--|---|
| Technical data : | |
| Operating voltage | 10...55 V DC |
| Nominal current per signal | 4 A |
| Total current | 12 A |
| Insulation resistance | > 100 MΩ |
| Ambient temperature range | -25...70 °C |
| Protection : | |
| Protection degree | IP67 / IP65 (Souriau) |
| Materials : | |
| Housing | Anodized aluminium |
| Potting | PUR (UL94-V0 self-extinguishing) |
| M12 female receptacle : | |
| Receptacle material | CuZn, nickel-plated |
| Contact diameter | 5 x Ø1 mm |
| Contact material | CuZn, pre-plated with nickel and gold-plated |
| Contact resistance | < 5 mΩ |
| Male receptacle (Souriau) : | |
| Receptacle material | Aluminium |
| Contact diameter | 26 x Ø1,5 mm |
| Contact material | Copper alloy, silver-plated |
| Contact resistance | < 2,5 mΩ |
| Cable characteristics : | |
| Sheath material | Halogen free PUR |
| Wire structure | 3 G 1 mm ² + 16 x 0,34 mm ² |
| Conductor class | 6 |
| Sheath diameter | 10,9 mm |
| Flame resistance according to | IEC 60332-1 (VDE 0472-804/B) |
| Oil resistance according to | EN 50363 & IEC 60811-2-1 & CNOMO |
| Cable length : | |
| L standard lengths | 0,2 m / 0,5 m / 1 m |
| Other length | On request |
| Reference : replace «...» by length required: 002 / 005 / 01 | |
| Accessories (included) : | |
| 9 label holders (KM6/27) | |
| 4 plugs (OBTM12) | |



Dimensions :



Wiring diagram :

