

Materials :

Housing	Stainless steel
Coating (tip and body)	Titanium Nitride

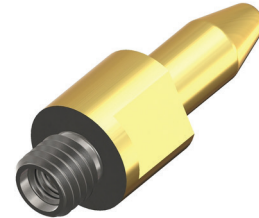
Operating conditions :

Sensor reference to associate to this accessory : C12T305L040932

Detected nuts : M14 ferromagnetic nuts

(*) : Optimal sensing point

OBTLO4M14SW16
Nuts sensor
L04,6



RoHS

Dimensions :

