

### Technical data :

Rated voltage	48 V DC
Rated current	6 A (Ø1mm) / 10 A (Ø1,5mm)
Insulation resistance	> 100 MΩ
Ambient temperature range	-40...90 °C

### Protection :

Protection degree	IP67
-------------------	------

### M23 female receptacle :

Mounting type	External screwing
Receptacle material	CuZn, nickel-plated
Locking nut/screw material	CuZn, nickel-plated
Contact diameter	16 x Ø1 mm + 3 x Ø1,5 mm
Contact material	CuZn, pre-plated with nickel and gold-plated
Contact resistance	< 5 mΩ
Ground contact (N°12) connected to metal body of connector	

### Wire strand characteristics :

Sheath material	PVC wire strand
Wire structure	3 G 1 mm <sup>2</sup> + 16 x 0,34 mm <sup>2</sup>
Conductor class	6
Flame resistance according to	IEC 60332-1-2

### Cable length :

L standard lengths	1 m / 2 m / 5 m / 10 m
Other length	On request

Reference : replace «...» by length required: 01/02/05/10

### Accessories (included) :

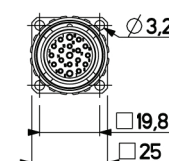
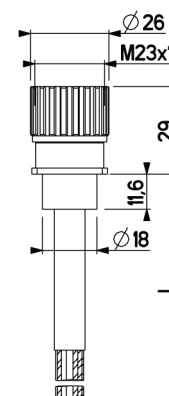
- 4 screws M3-10mm, DIN84, ISO1207
- 4 nuts M3, DIN934, ISO4032
- 4 lock washers, DIN 7698
- 1 flat seal (NBR)

## L2319EE...5SGMC

Industrial automation



### Dimensions :



### Wiring diagram :

