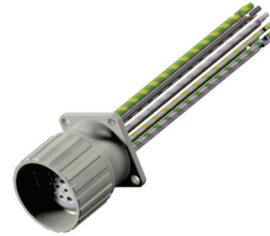


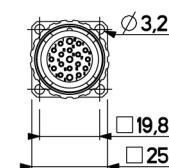
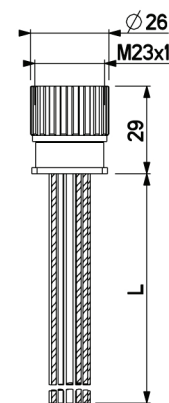
Technical data :		
Rated voltage		48 V DC
Rated current	6 A (Ø1mm) / 10 A (Ø1,5mm)	
Insulation resistance		> 100 MΩ
Ambient temperature range		-40...90 °C
Protection :		
Protection degree		IP67
M23 female receptacle :		
Mounting type		External screwing
Receptacle material		CuZn, nickel-plated
Locking nut/screw material		CuZn, nickel-plated
Contact diameter		16 x Ø1 mm + 3 x Ø1,5 mm
Contact material		CuZn, pre-plated with nickel and gold-plated
Contact resistance		< 5 mΩ
Ground contact (N°12) connected to metal body of connector		
Wire strand characteristics :		
Sheath material		PVC wire strand
Wire structure		3 G 1 mm ² + 16 x 0,34 mm ²
Conductor class		6
Flame resistance according to		IEC 60332-1-2
Cable length :		
L length		2 m
Other length		On request
Accessories (included) :		
4 screws M3-10mm, DIN84, ISO1207		
4 nuts M3, DIN934, ISO4032		
4 lock washers, DIN 7698		
1 flat seal (NBR)		

L2319EE025SG

Industrial automation



Dimensions :



Wiring diagram :

