

Technical data :

| | |
|---------------------------|-------------|
| Rated voltage | 24 V AC/DC |
| Rated current | 4 A |
| Ambient temperature range | -25...70 °C |

Protection :

| | |
|-------------------|------|
| Protection degree | IP67 |
|-------------------|------|

M12 straight male connector :

| | |
|----------------------------|--|
| Locking nut/screw material | Zamak, nickel-plated |
| Overmoulding material | TPU, self-extinguishing |
| Contact diameter | Ø1 mm |
| Contact material | CuZn, pre-plated with nickel and gold-plated |
| Contact resistance | < 5 mΩ |

Solenoid valve connector (Form A) :

| | |
|-------------------------------------|----------------------------------|
| Overmoulding material | TPU, self-extinguishing |
| Contact centre distance | 18 mm |
| Contact material | CuSn |
| Integrated interference suppression | Transil diode |
| Diode nominal voltage | 42 V @ 1 mA |
| Diode peak-limiting voltage | 58 V @ 25,8 A |
| Max. peak pulse power | 1500 W @ 25 °C (pulse 10/1000µs) |
| LED(s) colour | Green LED |
| Compatibility type | PNP |
| Current consumption per LED | < 5 mA |

Status indication :

| | |
|--------|-----------|
| Signal | Green LED |
|--------|-----------|

Cable characteristics :

| | |
|---------------------------------|----------------------------------|
| Sheath material | Halogen free PUR |
| Wire structure | 3 G 0,50 mm ² |
| Conductor class | 6 |
| Sheath diameter | 5 mm |
| Flame resistance according to | IEC 60332-1 (VDE 0472-804/B) |
| Oil resistance according to | EN 50363 & IEC 60811-2-1 & CNOMO |
| Halogen free cable according to | IEC 60754-1 |

Cable length :

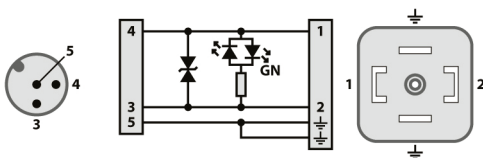
| | |
|--------------------|------------------------|
| L standard lengths | 1 m / 2 m / 5 m / 10 m |
| Other length | On request |

Reference : replace «...» by length required: 1/2/5/10

Accessories (included) :

- 1 captive screw on the solenoid valve connector
- 1 sticker on the solenoid valve connector
- 1 label holder

Wiring diagram :



L12/5LA...2

Industrial automation



RoHS

Dimensions :

