

**Technical data :**

Operating voltage	10...30V DC
No-load consumption	< 25 mA
Operating current	200 mA max.
Ambient temperature range	-25...70 °C

**Protection :**

Protection degree	IP65
Reverse polarity protection	
Output overload and short-circuit protection	
Input overload and short-circuit protection	
IEC 61000-4-2 (ESD)	4 kV contact / 8kV air
IEC 61000-4-4 (Burst)	2kV / 5kHz
IEC 61000-4-6 (RF conducted)	3V 150kHz...80MHz

**Status indication :**

Power (PWR)	Green LED
Inputs (E1...E6)	Yellow LEDs
Outputs	Yellow LEDs
Short-circuit output (DIA/O)	Red LED

**Materials :**

'Electrical' housing	Anodized aluminium
'Pneumatical' housing	Anodized aluminium
Potting	PUR (UL94-V0 self-extinguishing)

**M12 female receptacle :**

Receptacle material	CuZn, nickel-plated
Contact diameter	5 x Ø1 mm
Contact material	CuZn, pre-plated with nickel and gold-plated
Contact resistance	< 5 mΩ

**Connector (Harting / Ilme) :**

Receptacle material	Metal
Connector *A* : 25 poles (electric)	
Connector *B* : 2x2 position (pneumatic)	
Connector *C* : 2x2 position (pneumatic)	

**Cable characteristics :**

Sheath material	PVC
Wire structure	12 x 0,25 mm <sup>2</sup>
Conductor class	5
Sheath diameter	7 mm
Flame resistance according to	IEC 60332-1 (VDE 0472-804/B)

**Cable protection characteristics :**

PA66 corrugated tubing + silicone braided sleeving

**Cable protection characteristics :**

Silicone rubber-coated fiberglass braided sleeving  
Max. contact temperature +250°C (peak +290°C)

**Cable length :**

L length	0,7 m
Other length	On request

**Accessories (included) :**

1 joint plat + 4 bouchons (OBTM12EEP)

**Accessories (not included) :**

Logic plug (SHUNT124)  
Fitting of a SHUNT124 «logic plug» on each unused receptacle.

**Female pneumatic connectors :**

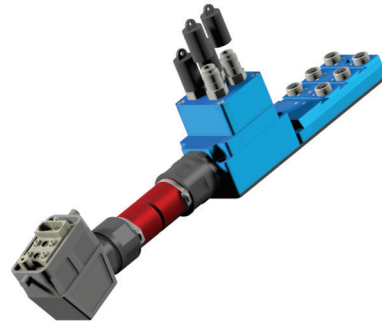
Type RECTUS 21KA model - Nominal pressure 7 bar  
Polyamide - Øint 4 mm - Øext 6 mm - Nominal pressure 7 bars

Truth table & wiring diagram :

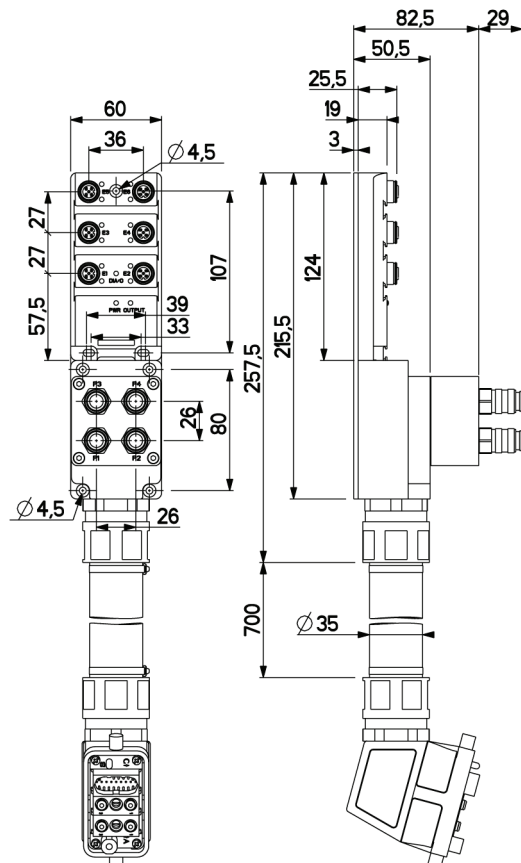
**See following page**

## EP12ET/46005HC10E

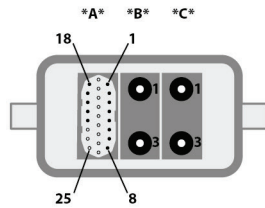
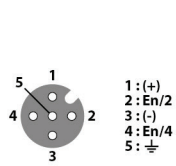
Industrial automation



**Dimensions :**



**Truth table & wiring diagram :**



**Electrical Wiring Diagram**

- \*A\* 1 : + 10...30 V DC
- 2 : 0 V
- 3 : OUTPUT
- 4 : C1\_b0
- 5 : C1\_b1
- 6 : C1\_b2
- 7 : C1\_b3
- 8 : Rotary Encoder Common
- 18 : + 10...30 V DC
- 19 : + 10...30 V DC
- 20 : + 10...30 V DC
- 21 : C2\_b0
- 22 : C2\_b1

**Pneumatical Wiring Diagram**

HAN Connector	Pneumatical Box
*B* : 1	P3
*B* : 3	P4

HAN Connector	Pneumatical Box
*C* : 1	P1
*C* : 3	P2

**Truth Table**

E1/2	E1/4	E2/2	E2/4	E3/2	E3/4	E4/2	E4/4	E5/2	E5/4	E6/2	E6/4	OUTPUT
1	1	1	1	1	1	1	1	1	1	1	1	1
<b>Other combinations</b>												<b>0</b>