

**Technical data :**

Rated operating distance (Sn)	2 mm
Mounting mode	Flush
Output type	PNP
Function	NO+NC
Operating voltage	10...30V DC
Operating current	200 mA
No-load consumption	< 20 mA
Voltage drop	< 2 V
Residual current	< 70 µA
Ambient temperature range	-25...70 °C
Hysteresis	3...15 %
Repeatability	< 5 %
Switching frequency	1 kHz

**Protection :**

Reverse polarity protection	
Short-circuit protection	
Overload protection	
IEC 61000-4-2 (ESD)	4 kV contact / 8kV air
IEC 61000-4-4 (Burst)	2kV / 5kHz
IEC 61000-4-6 (RF conducted)	3V 150kHz...80MHz
Protection degree	IP67

**Materials :**

Housing	Anodized aluminium
Connector	Brass, nickel-plated
Sensing face	PA

**Status indication :**

Output S4	Yellow LED
Output S2	Green LED

**Connection :**

Connector	M12
-----------	-----

**Accessories (included) :**

2 label holders

**Accessories (not included) :**

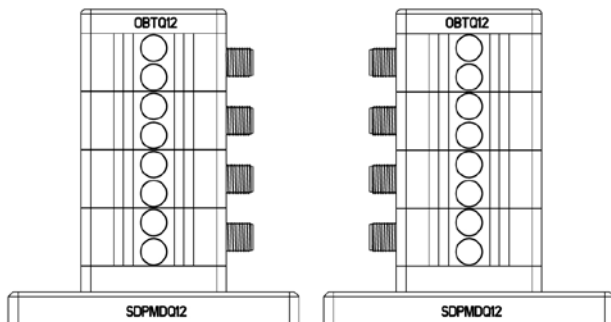
Base (with 1 label holder) : SDPMDQ12

Hood : OBTQ12

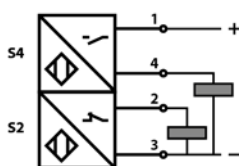
**Remarks :**

Sensor mounting way allows M12 left or right connector positioning

**Details view (Fixing) :**



**Connection diagram :**

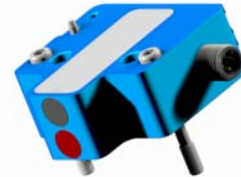


**Pin assignment :**



## A42P3M3Q120211

Pitch = 12 mm  
LC12



**Dimensions :**

