

**Technical data :**

|                               |              |
|-------------------------------|--------------|
| Rated operating distance (Sn) | 2 mm         |
| Mounting mode                 | Flush        |
| Function                      | NC+NC        |
| Operating voltage             | 10...55V DC  |
| Operating current             | 1,5...100 mA |
| Voltage drop                  | < 5 V        |
| Residual current              | < 600 µA     |
| Ambient temperature range     | -25...70 °C  |
| Hysteresis                    | 3...15 %     |
| Repeatability                 | < 5 %        |
| Switching frequency           | 1 kHz        |

**Protection :**

|                              |                        |
|------------------------------|------------------------|
| Reverse polarity protection  |                        |
| Short-circuit protection     |                        |
| Overload protection          |                        |
| IEC 61000-4-2 (ESD)          | 4 kV contact / 8kV air |
| IEC 61000-4-4 (Burst)        | 2kV / 5kHz             |
| IEC 61000-4-6 (RF conducted) | 3V 150kHz...80MHz      |
| Class II insulation          |                        |
| Protection degree            | IP67                   |

**Materials :**

|              |                      |
|--------------|----------------------|
| Housing      | Anodized aluminium   |
| Connector    | Brass, nickel-plated |
| Sensing face | PA                   |

**Status indication :**

|           |            |
|-----------|------------|
| Output S4 | Yellow LED |
| Output S2 | Green LED  |

**Connection :**

|           |     |
|-----------|-----|
| Connector | M12 |
|-----------|-----|

**Accessories (included) :**

2 label holders

**Accessories (not included) :**

Base (with 1 label holder) : SDPMDQ12

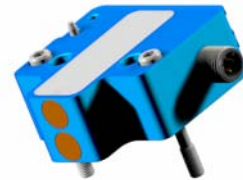
Hood : OBTQ12

**Remarks :**

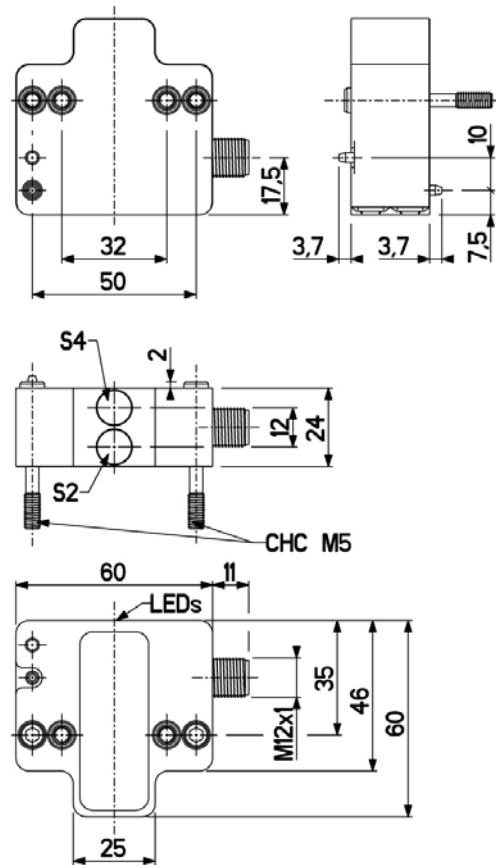
Sensor mounting way allows M12 left or right connector positioning

## A4292M2Q120211

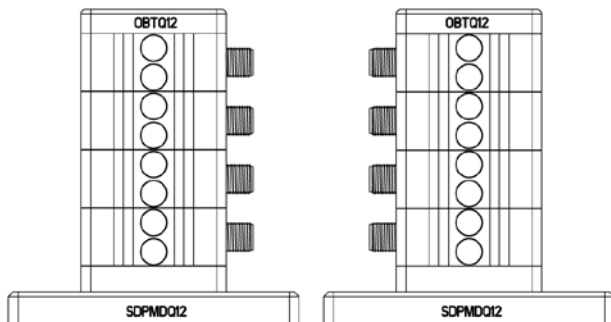
Pitch = 12 mm  
LC12



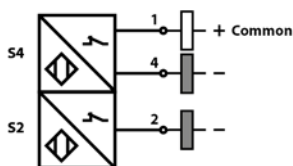
**Dimensions :**



**Details view (Fixing) :**



**Connection diagram :**



**Pin assignment :**

