

**Technical data :**

Rated operating distance (Sn)	10 mm (*)
Mounting mode	Flush
(*) Front detection	
Function	NC
Operating voltage	20...250 V AC/DC (45...65 Hz)
Operating current	3...150 mA
Maximum overcurrent	2,2 A (10 ms / 3 Hz)
Voltage drop	< 6 V
Residual current	< 1,5 mA
Ambient temperature range	-25...70 °C
Hysteresis	3...15 %
Repeatability	< 5 %
Switching frequency	25 Hz AC / 100 Hz DC

**Protection :**

Non-polarised	
Class II insulation	
Protection degree	IP67

**Materials :**

Housing	PA
Sensing face	PA

**Status indication :**

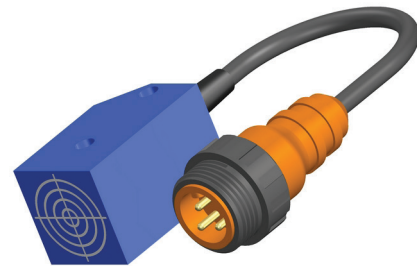
Output	Yellow LED
--------	------------

**Connection :**

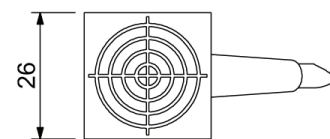
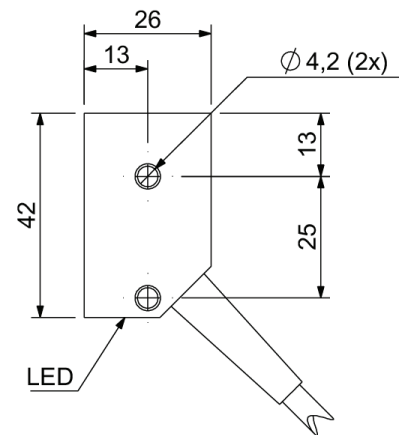
Connector	7/8
Cable	PUR
Cable length	0,2 m

**A139202Q261021F**

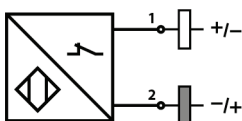
Q26



**Dimensions :**



**Connection diagram :**



**Pin assignment :**

