

Technical data :

Rated operating distance (Sn)	1,8 mm
Mounting mode	Flush
Output turn on above 1260 detections per minute, if the direction of rotation of the part to detect (610 204 ind A or 700 010 ind A) is compliant	
Output type	PNP
Function	NO
Operating voltage	10...30V DC
Operating current	200 mA
Non-Load consumption	< 20 mA
Voltage drop	< 2 V
Residual current	< 70 µA
Ambient temperature range	0...70 °C
Hysteresis	3...15 %
Repeatability	< 3 %
Switching frequency	1 kHz

Protection :

Reverse polarity protection	
Short-circuit protection	
Overload protection	
IEC 61000-4-2 (ESD)	4kV Contact / 8kV Air
IEC 61000-4-4 (Burst)	2kV / 5kHz
IEC 61000-4-6 (RF conducted)	3V 150kHz...80MHz
Protection degree	IP67

Materials :

Housing	Anodized aluminium
Sensing face	PA

Status indication :

Power	Green LED
Detection	Yellow LED
Output	Yellow LED

Connection :

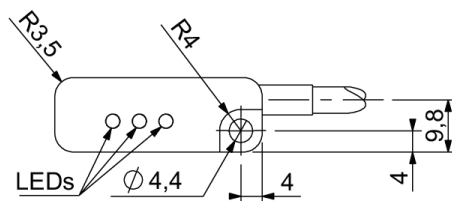
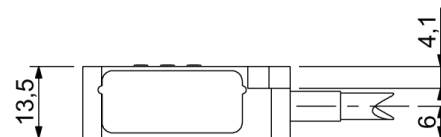
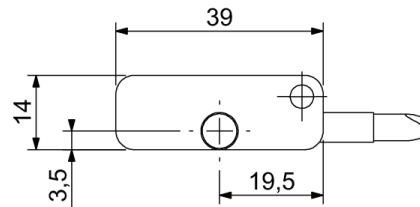
Connector	M12
Cable	Halogen free PUR
Cable length	0,2 m (0/+20 mm)

A1263RBQ390141

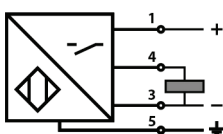
Speed and direction of rotation controller Q39



Dimensions :



Connection diagram :



Pin assignment :

