

Technical data :

| | |
|---|--------------|
| Rated operating distance (Sn) | 1,3 mm |
| Mounting mode | Flush |
| Output switches above 800 detections per minute | |
| Output type | PNP |
| Function | NO |
| Operating voltage | 10...30 V DC |
| Operating current | 200 mA |
| No-load consumption | < 15 mA |
| Voltage drop | < 2 V |
| Residual current | < 70 μ A |
| Ambient temperature range | 0...70 °C |
| Hysteresis | 2...15 % |
| Repeatability | < 5 % |
| Switching frequency | 1 kHz |

Protection :

| | |
|------------------------------|------------------------|
| Reverse polarity protection | |
| Short-circuit protection | |
| Overload protection | |
| IEC 61000-4-2 (ESD) | 4 kV contact / 8kV air |
| IEC 61000-4-4 (Burst) | 2kV / 5kHz |
| IEC 61000-4-6 (RF conducted) | 3V 150kHz...80MHz |
| Protection degree | IP67 |

Materials :

| | |
|--------------|--------------------|
| Housing | Anodized aluminium |
| Sensing face | PA |

Status indication :

| | |
|-----------|------------|
| Power | Green LED |
| Detection | Yellow LED |
| Output | Yellow LED |

Connection :

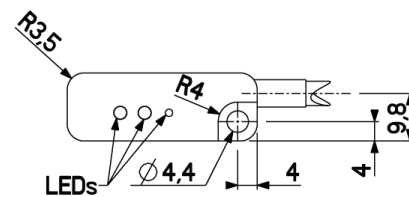
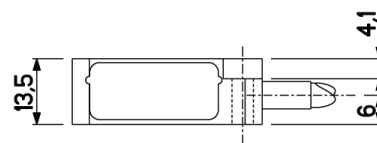
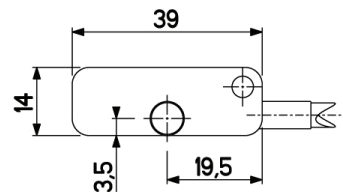
| | |
|--------------|-------------------|
| Connector | M12 |
| Cable | PUR, halogen free |
| Cable length | 0,2 m |

A1263R9Q390141

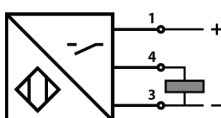
Speed controller
Q39



Dimensions :



Connection diagram :



Pin assignment :

