

**Technical data :**

Rated operating distance (Sn)	1,8 mm
Mounting mode	Flush
Output switches above 800 detections per minute	
Output type	PNP
Function	NO
Operating voltage	10...30 V DC
Operating current	200 mA
No-load consumption	< 15 mA
Voltage drop	< 2 V
Residual current	< 70 µA
Ambient temperature range	-25...70 °C
Hysteresis	2...15 %
Repeatability	< 5 %
Switching frequency	1 kHz

**Protection :**

Reverse polarity protection	
Short-circuit protection	
Overload protection	
IEC 61000-4-2 (ESD)	4 kV contact / 8kV air
IEC 61000-4-4 (Burst)	2kV / 5kHz
IEC 61000-4-6 (RF conducted)	3V 150kHz...80MHz
Protection degree	IP67

**Materials :**

Housing	Anodized aluminium
Sensing face	PA

**Status indication :**

Power	Green LED
Detection	Yellow LED
Output	Yellow LED

**Connection :**

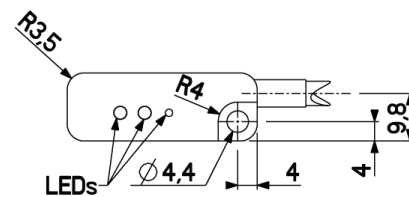
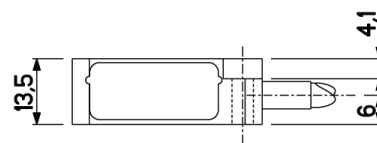
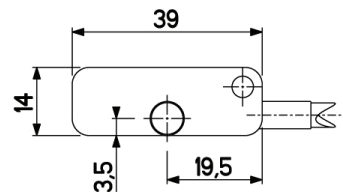
Connector	M12
Cable	PUR, halogen free
Cable length	0,2 m

## A1263R7Q390141

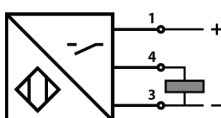
Speed controller  
Q39



**Dimensions :**



**Connection diagram :**



**Pin assignment :**

