

Technical data :

| | |
|-------------------------------|-------------|
| Rated operating distance (Sn) | 1,5 mm |
| Mounting mode | Flush |
| Output type | PNP |
| Function | NO |
| Operating voltage | 10...30V DC |
| Operating current | 100 mA |
| No-load consumption | < 10 mA |
| Voltage drop | < 1 V |
| Residual current | < 70 µA |
| Ambient temperature range | -25...70 °C |
| Hysteresis | 3...15 % |
| Repeatability | < 5 % |
| Switching frequency | 1 kHz |

Protection :

| | |
|------------------------------|------------------------|
| Reverse polarity protection | |
| Short-circuit protection | |
| Overload protection | |
| IEC 61000-4-2 (ESD) | 4 kV contact / 8kV air |
| IEC 61000-4-4 (Burst) | 2kV / 5kHz |
| IEC 61000-4-6 (RF conducted) | 3V 150kHz...80MHz |
| Protection degree | IP67 |

Materials :

| | |
|--------------|-----------|
| Housing | Noryl |
| Connector | Aluminium |
| Sensing face | Noryl |

Connection :

| | |
|--------------|--------|
| Connector | M12 |
| Cable | PVC |
| Cable length | 0,09 m |

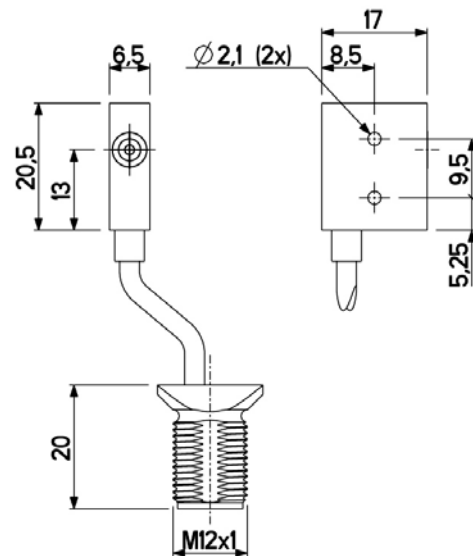
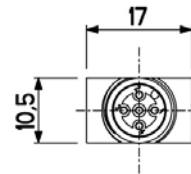
Accessories (included) :

- 1 nickel plated brass fixing nut
- 1 protection cap for each M12 socket

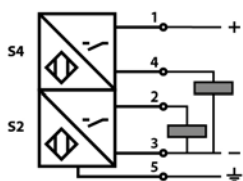
A1263E5FKSM4T9



Dimensions :



Connection diagram :



Pin assignment :

