

Technical data :

Rated operating distance (Sn)	7 mm
Mounting mode	Flush
Output type	PNP
Function	NO
Operating voltage	10...30V DC
Operating current	200 mA
No-load consumption	< 15 mA
Voltage drop	< 2 V
Residual current	< 70 µA
Ambient temperature range	0...85 °C
Hysteresis	3...15 %
Repeatability	< 5 %
Switching frequency	4 Hz

Protection :

Reverse polarity protection	
Short-circuit protection	
Overload protection	
IEC 61000-4-2 (ESD)	4 kV contact / 8kV air
IEC 61000-4-4 (Burst)	2kV / 5kHz
IEC 61000-4-6 (RF conducted)	3V 150kHz...80MHz
Protection degree	IP67

Materials :

Housing	Anodized aluminium
Sensing face	PA

Status indication :

Power	Green LED
Output	Yellow LED

Connection :

Cable	PUR (3x0,34mm ²)
Cable length	2 m

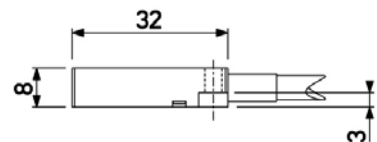
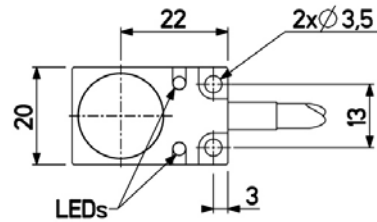
Remark :

Crimped cable lugs
Blue marking on the cable #10 cm from the housing

A126352Q320741P
Galvanised metal dust proof
Q32



Dimensions :



Connection diagram :

