

**Technical data :**

|                               |             |
|-------------------------------|-------------|
| Rated operating distance (Sn) | 1,5 mm      |
| Mounting mode                 | Flush       |
| Output type                   | PNP         |
| Function                      | NO          |
| Operating voltage             | 10...30V DC |
| Operating current             | 100 mA      |
| No-load consumption           | < 5 mA      |
| Voltage drop                  | < 0,5 V     |
| Residual current              | < 70 µA     |
| Ambient temperature range     | -25...70 °C |
| Hysteresis                    | 3...15 %    |
| Repeatability                 | < 5 %       |
| Switching frequency           | 5 kHz       |

**Protection :**

|                             |      |
|-----------------------------|------|
| Reverse polarity protection |      |
| Short-circuit protection    |      |
| Overload protection         |      |
| Class II insulation         |      |
| Protection degree           | IP67 |

**Materials :**

|              |    |
|--------------|----|
| Housing      | PA |
| Sensing face | PA |

**Status indication :**

|        |            |
|--------|------------|
| Output | Yellow LED |
|--------|------------|

**Connection :**

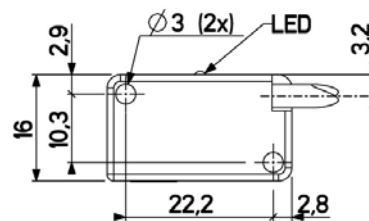
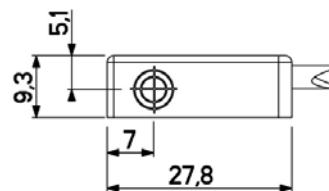
|              |                              |
|--------------|------------------------------|
| Cable        | PVC (3x0,14mm <sup>2</sup> ) |
| Cable length | 2,5 m                        |

**A126351Q150121**

Q15



**Dimensions :**



**Connection diagram :**

