

Technical data :

Rated operating distance (Sn)	2 mm
Mounting mode	Flush
Clamp opening angle: 96°	
Output type	PNP
Function	NO
Operating voltage	10...30 V DC
Operating current	200 mA
No-load consumption	< 20 mA
Voltage drop	< 2 V
Residual current	< 70 µA
Ambient temperature range	-25...70 °C
Hysteresis	3...5 %
Repeatability	< 5 %
Switching frequency	100 Hz

Protection :

Non-polarised	
Short-circuit protection	
Overload protection	
IEC 61000-4-2 (ESD)	4 kV contact / 8kV air
IEC 61000-4-4 (Burst)	2kV / 5kHz
IEC 61000-4-6 (RF conducted)	3V 150kHz...80MHz
Protection degree	IP67

Materials :

Housing	Anodized aluminium
Sensing face	PA

Status indication :

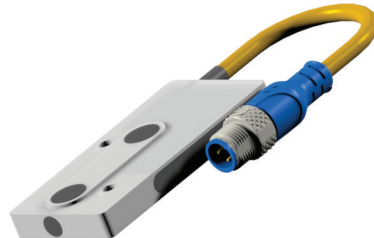
Power	Green LED
Output S2	Red LED
Output S4	Yellow LED

Connection :

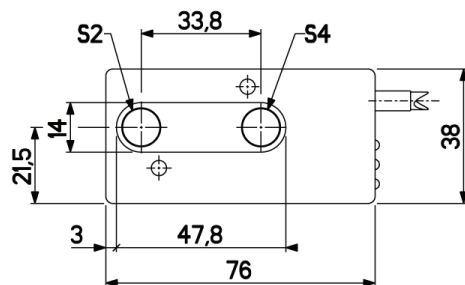
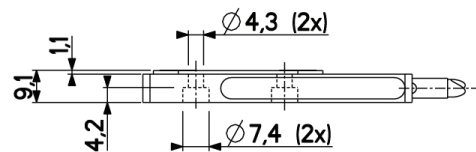
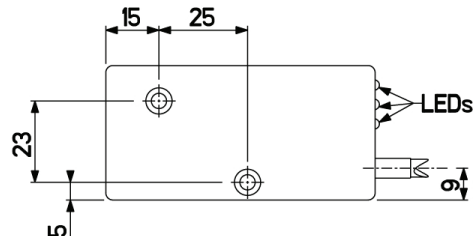
Connector	M12
Cable	PUR
Cable length	0,1 m

A126305PKS32T6

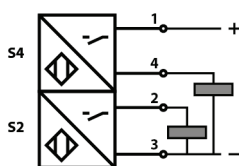
Series for clamps



Dimensions :



Connection diagram :



Pin assignment :

