

Technical data :

Rated operating distance (Sn)	10 mm (*)
Mounting mode	Flush
(*) Lateral detection	
Function	NO
Operating voltage	10...30V DC
Operating current	2...100 mA
Voltage drop	< 5 V
Residual current	< 800 µA
Ambient temperature range	0...110 °C
Hysteresis	3...15 %
Repeatability	< 5 %
Switching frequency	150 Hz

Protection :

Reverse polarity protection	
Short-circuit protection	
Overload protection	
IEC 61000-4-2 (ESD)	4 kV contact / 8kV air
IEC 61000-4-4 (Burst)	2kV / 5kHz
IEC 61000-4-6 (RF conducted)	3V 150kHz...80MHz
Protection degree	IP67

Materials :

Housing	PA
Sensing face	PA

Connection :

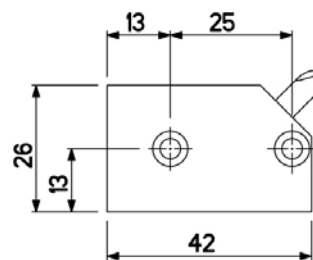
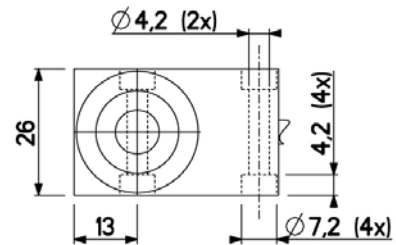
Connector	M12
Cable	PVC
Cable length	0,15 m

A1202E1Q261021L

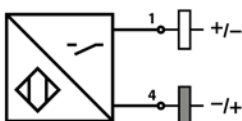
Q26



Dimensions :



Connection diagram :



Pin assignment :

